



O FUTURO É HOJE

"O futuro é hoje e,  
se não corrermos  
terá sido ontem."



O MUNDO MUDOU



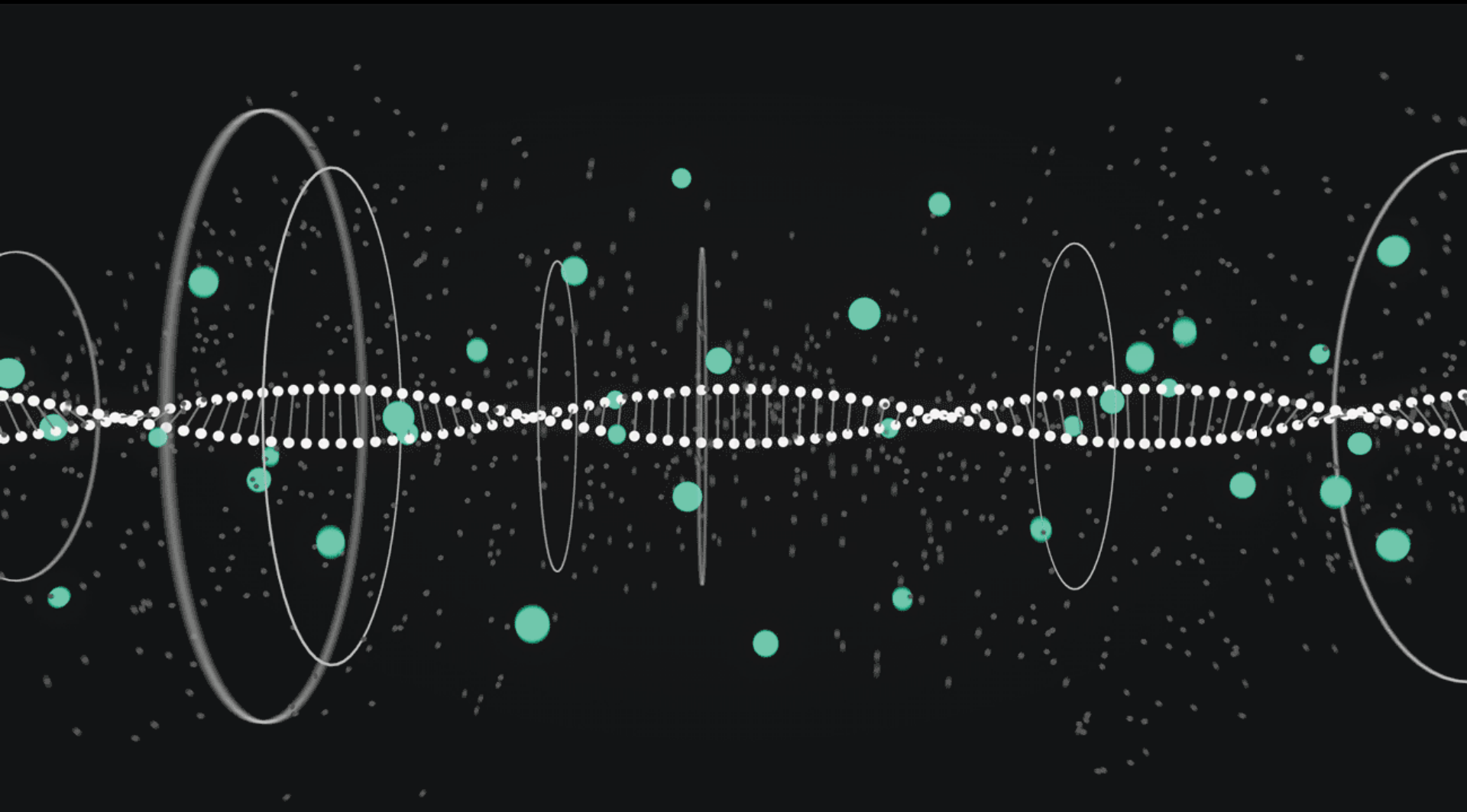


WORLD  
ECONOMIC  
FORUM

The logo for the World Economic Forum is displayed in white text on a dark blue background. The text is arranged in three lines: "WORLD" at the top, "ECONOMIC" in the middle, and "FORUM" at the bottom. A thin white line forms a partial circle around the text, starting from the top right and curving under the word "FORUM".



**65% DAS PROFISSÕES AINDA NÃO EXISTEM**









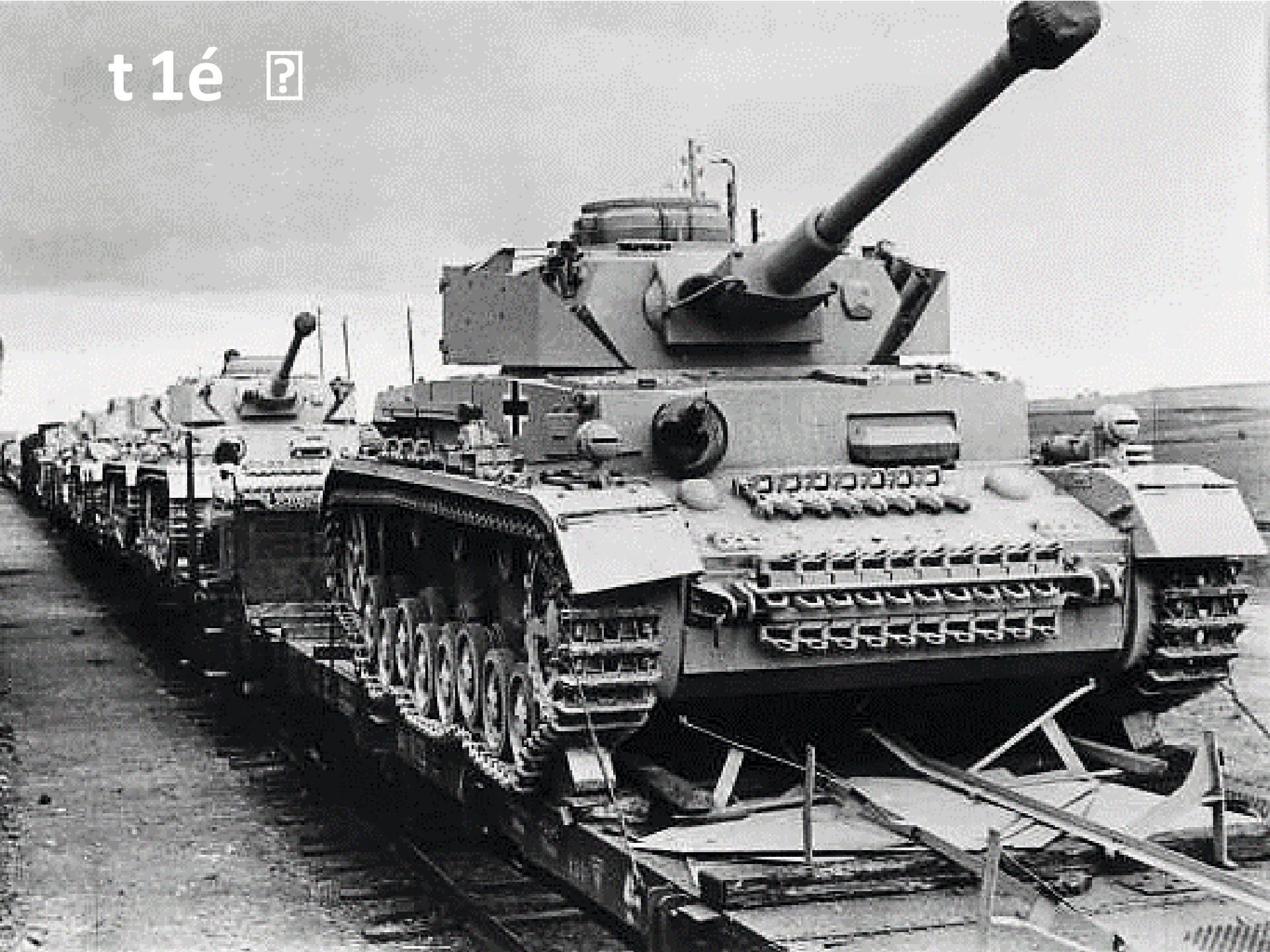
? ?



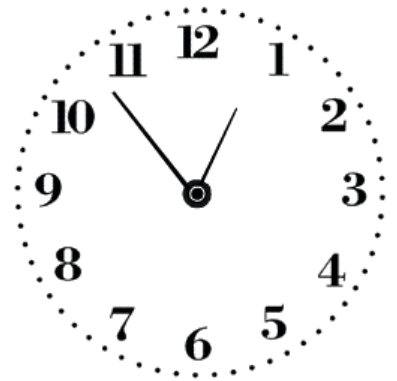
Até 1900



t1é ?



**“Lembre-se que as pessoas podem tirar tudo de você, menos o seu conhecimento.”**









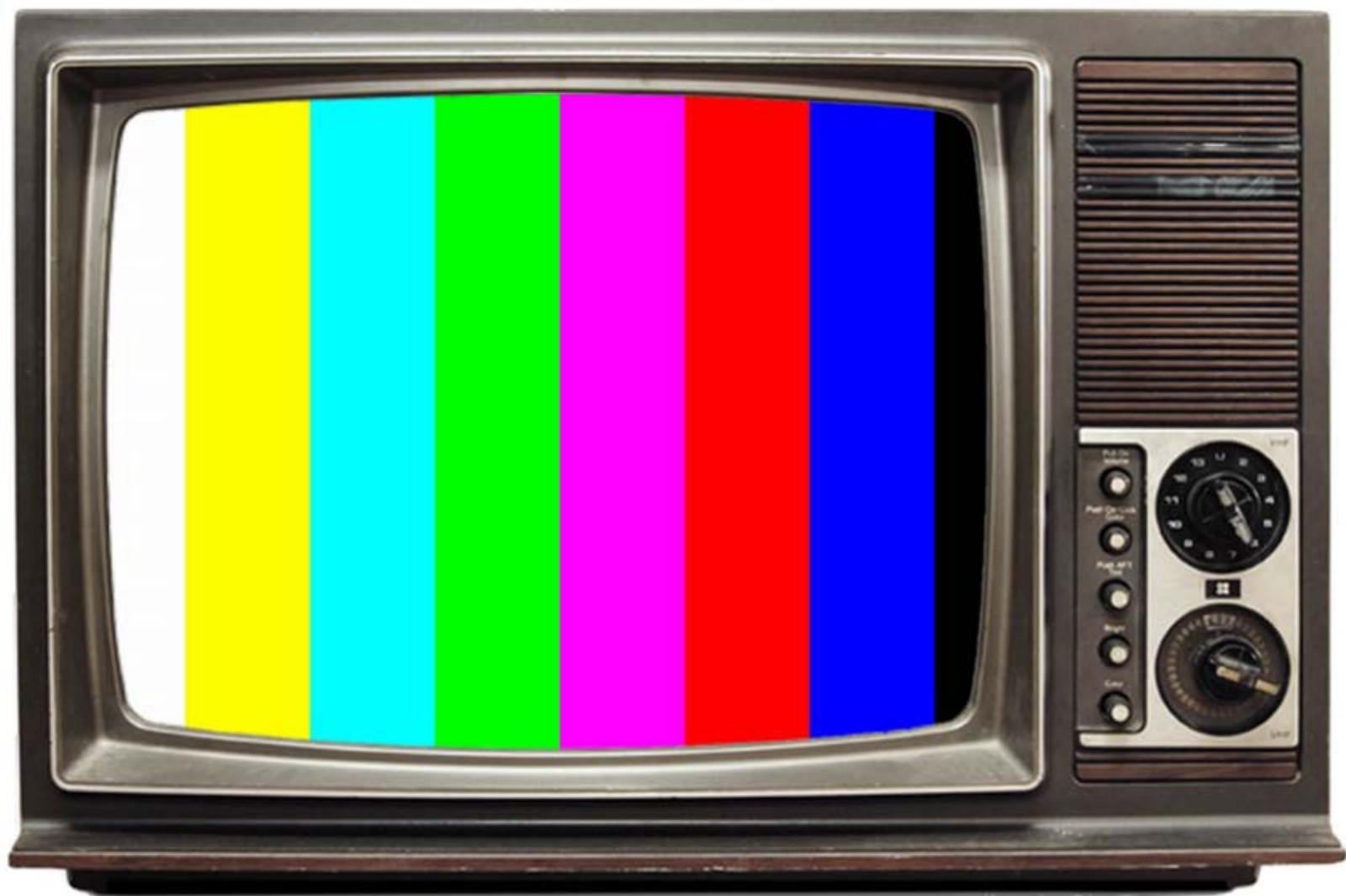














*vargas radios*

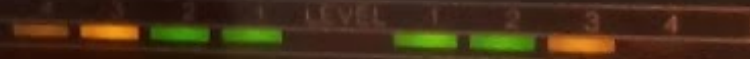
TUN  BAL

TONE  VO

FM 88 92 96 100 104 108  
STEREO  FM OFF AM  
AM 54 60 70 80 100 130 160

 GR-300

LEVEL 1 2 3 4 5



RANGE  +12  
 R  
MAX  
FADER  
ECHO

POWER  
DEFEAT

+12  
0  
-12



+12  
0  
-12









~~ontem~~

**HOJE!**

?AMANHÃ?





# Primeiro carro voador do mundo estará à venda a partir de outubro

Por ZAP - 26 setembro, 2018















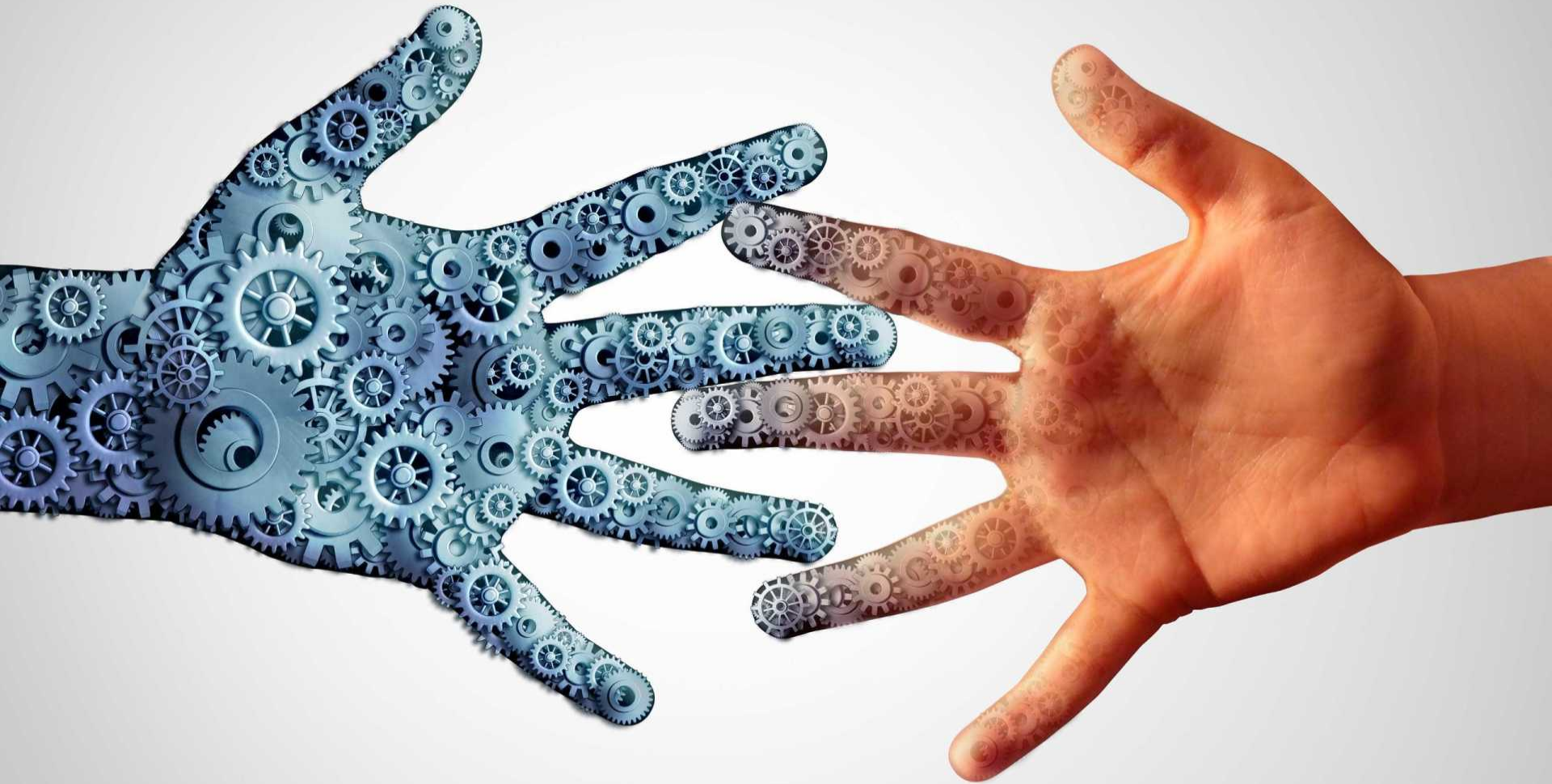


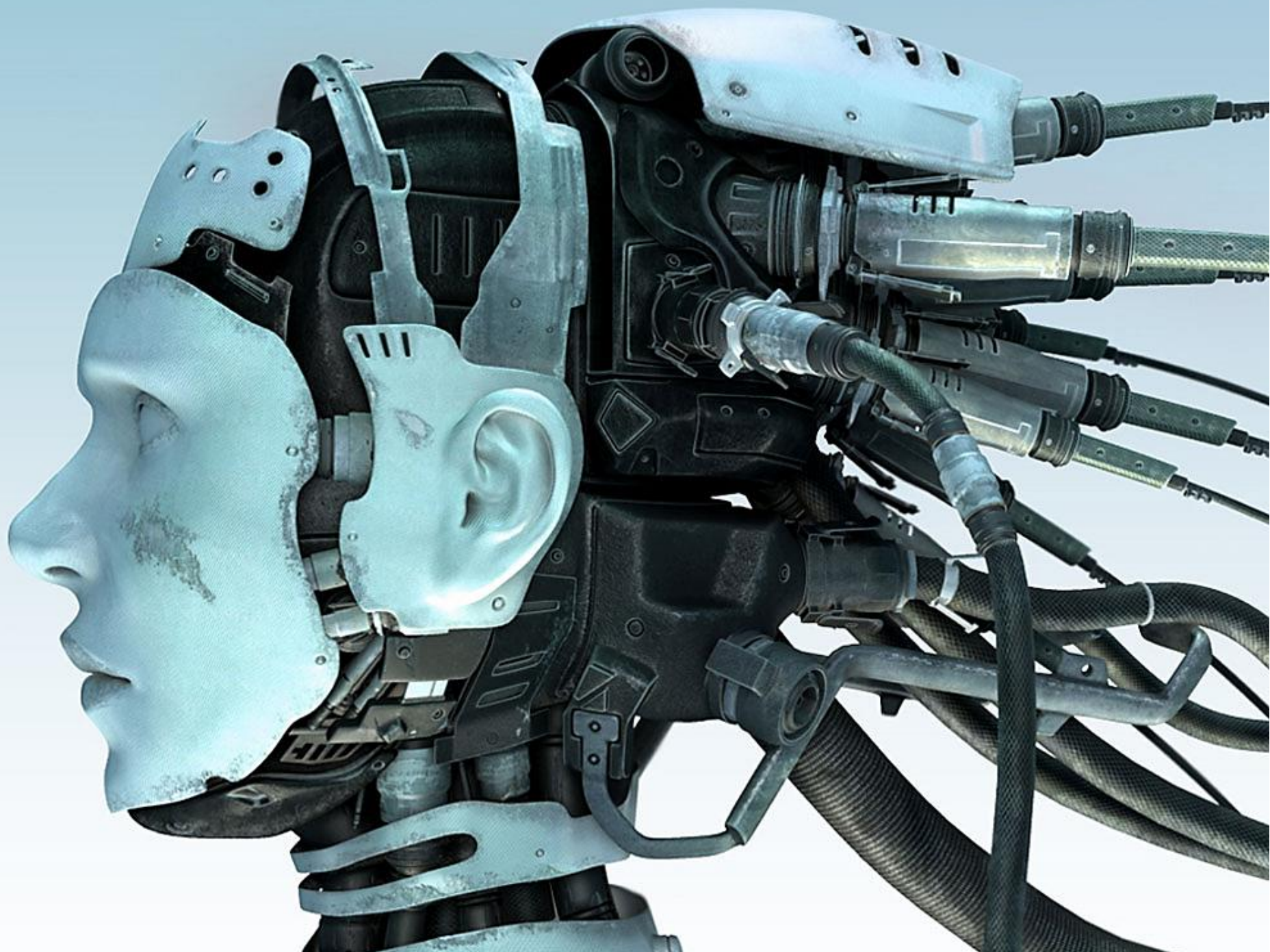
**“TODO DIA  
TEMOS UM  
NOVO FUTURO”**



**QUE MUNDO É ESSE ?**









?? ???? ? ?? ? ? ? ? ? ?





**OTTO**

9F50776

?? ? ? ? ? ? ? ? ? ? ? ? ? ? ?



AOC

HD



SWISS POST

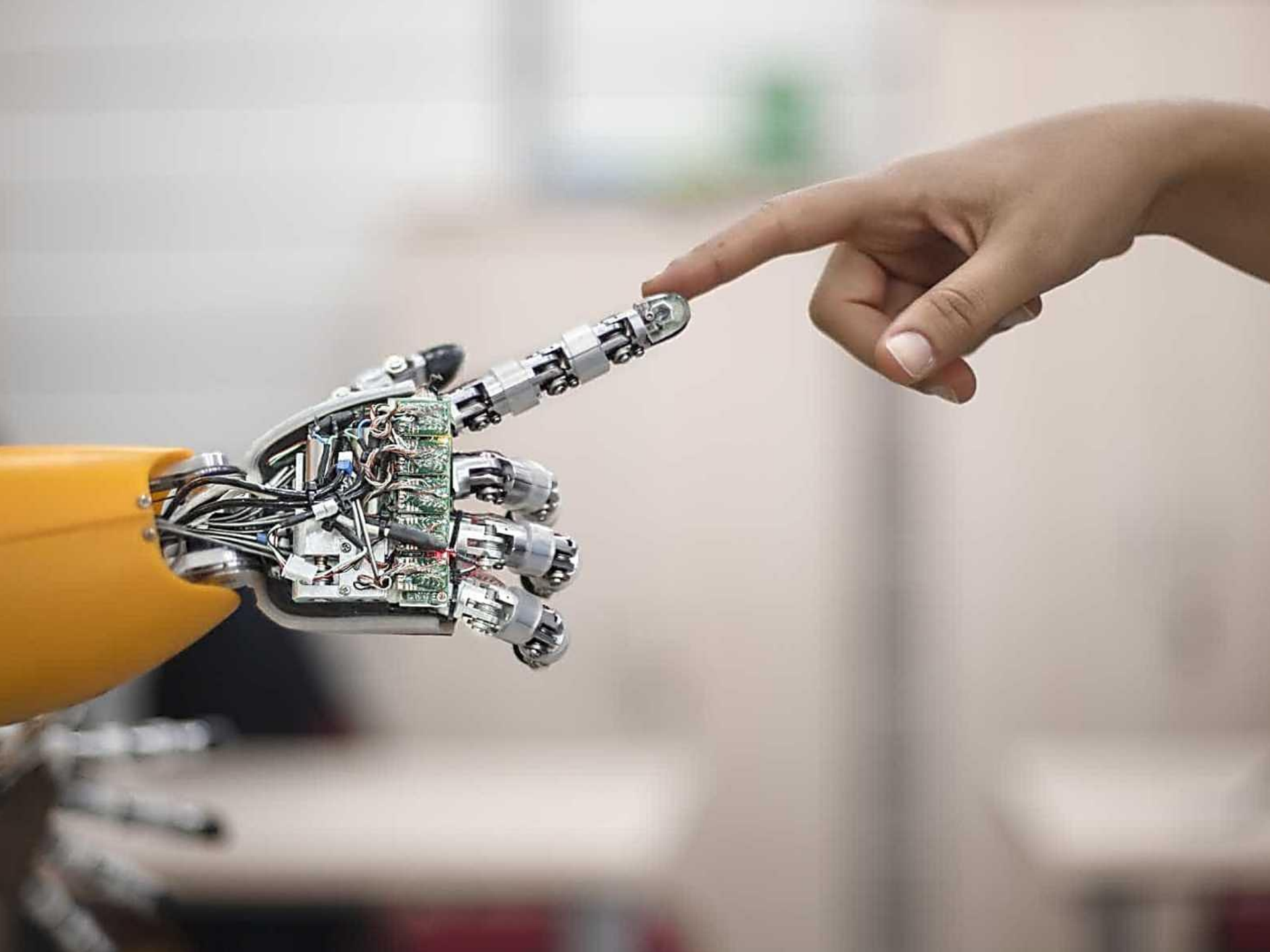


? ? ? ? ? ? ? ? ? ? ? ? ? ? ?



?? ? ? ? ? ? ? ? ? ? ?











**Eu entrevistei muitas pessoas  
diferentes ao longo dos anos,**

AOC

HD





?? ??? ?? ???? ???? ?

MOBRAL

??? ? ?? ? ? ? ?

SOBRAL



?? ? ? ? ? ? ? ? ? ? ?





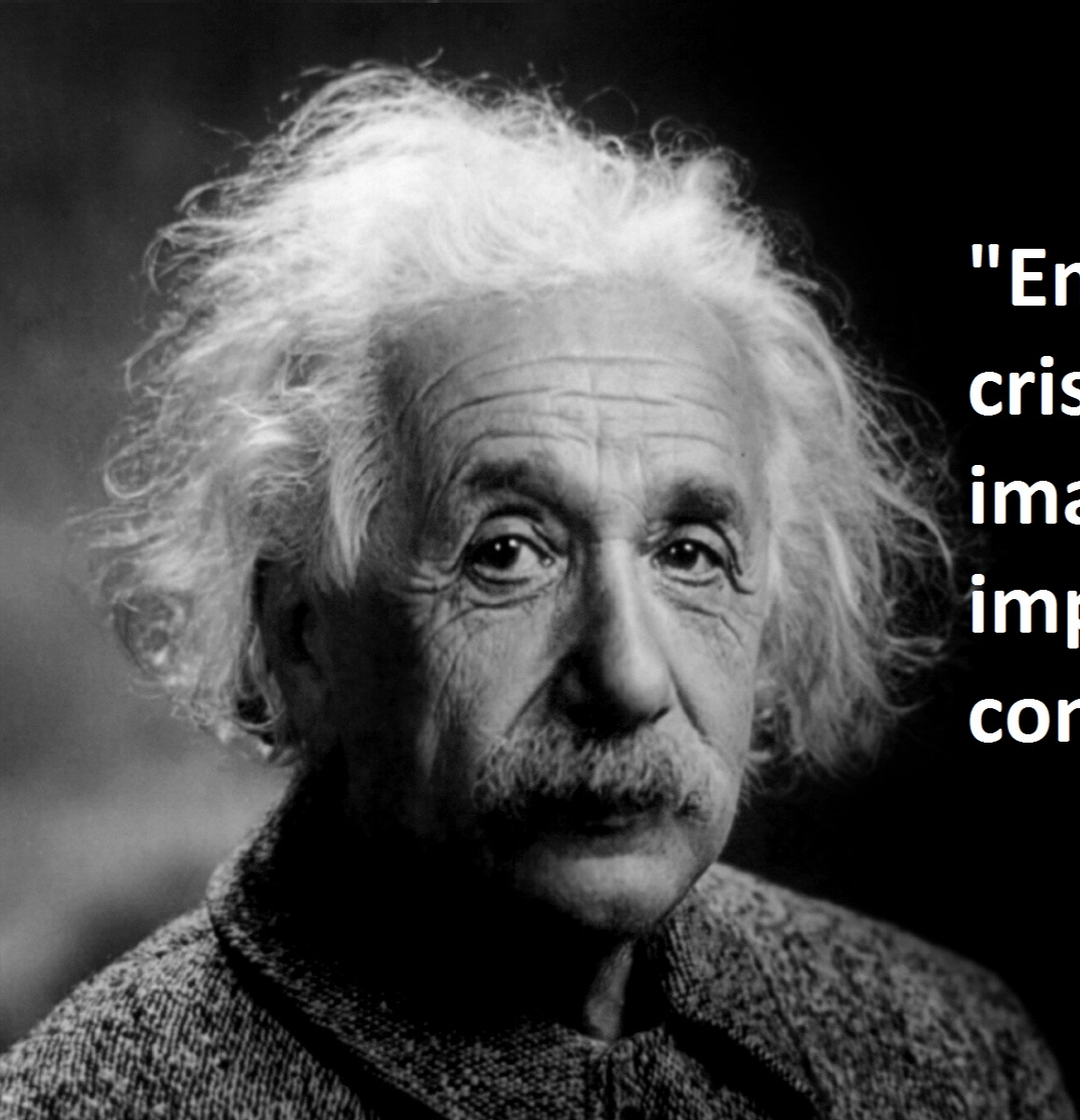












**"Em momentos de  
crise, só a  
imaginação é mais  
importante que o  
conhecimento."**

*Albert Einstein*



? ? ? ? ? ? ? ? ? ?










# NOVAS FORMAS DE ...



A dramatic scene featuring a bright spotlight beam shining from the top left corner onto a dark stage. The word "EDUCACÃO" is written in white, uppercase letters on the stage floor, illuminated by the spotlight. The background is dark, with some faint vertical lines visible on the right side.

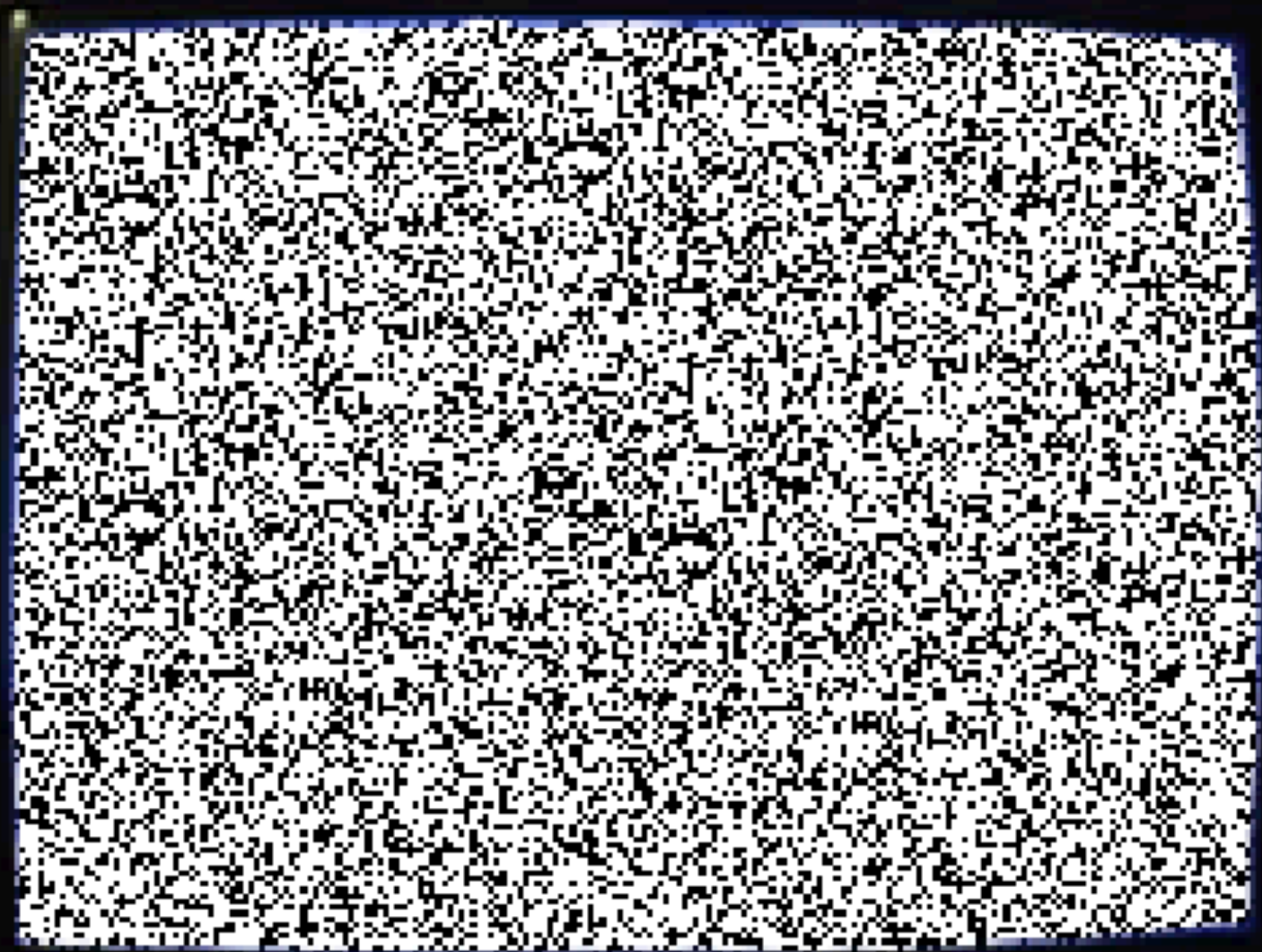
EDUCACÃO



**EDUCAÇÃO**

**EMPREENDEDORA**



















**SEBRAE & MUNICÍPIOS**

# DE QUE JEITO ?



Sebrae



Professor



Estudante

# ENSINO FUNDAMENTAL

$$E = mc^2$$

$$m\vec{a} = \sum_{i=1}^n \vec{F}_i$$

$$a^2 + b^2 = c^2$$

$$S = \pi R^2$$

$$\pi = 3,1415926$$

2643383279 502  
7510 582097494

???



6  
3  
99



# ENSINO MÉDIO





**ENSINO SUPERIOR**



# RECUPERAR

# O



TEMPO

PERDIDO!



**EDUCAÇÃO  
EMPREENDEDORA**

**INOVAÇÃO**



# TOCANTINS

**30 MUNICÍPIOS**

**25.000 ALUNOS**

**4 MUNICÍPIOS**

**15 ESCOLAS**

**4.346 ALUNOS**





# TOCANTINS

**30 MUNICÍPIOS**

**25.000 ALUNOS**

**12 MUNICÍPIOS**

**90 ESCOLAS**

**12.066 ALUNOS**

# TOCANTINS

30 MUNICÍPIOS

25.000 ALUNOS

8 MUNICÍPIOS

19 ESCOLAS

4.340 ALUNOS





# **TOCANTINS**

**30 MUNICÍPIOS**

**25.000 ALUNOS**

**6 MUNICÍPIOS**

**24 ESCOLAS**

**4.002 ALUNOS**

TÁ NA  
MÃO  
DE DEUS

DE DEUS  
TÁ NA



**TÁ**

**NA MÃO**

**DO PREFEITO**



**TÁ NA**

**MÃO**

**DA**

**PREFEITA**





EDUCAÇÃO EMPREENDEDORA



Obrigado



**OMAR 63 99968-0222**